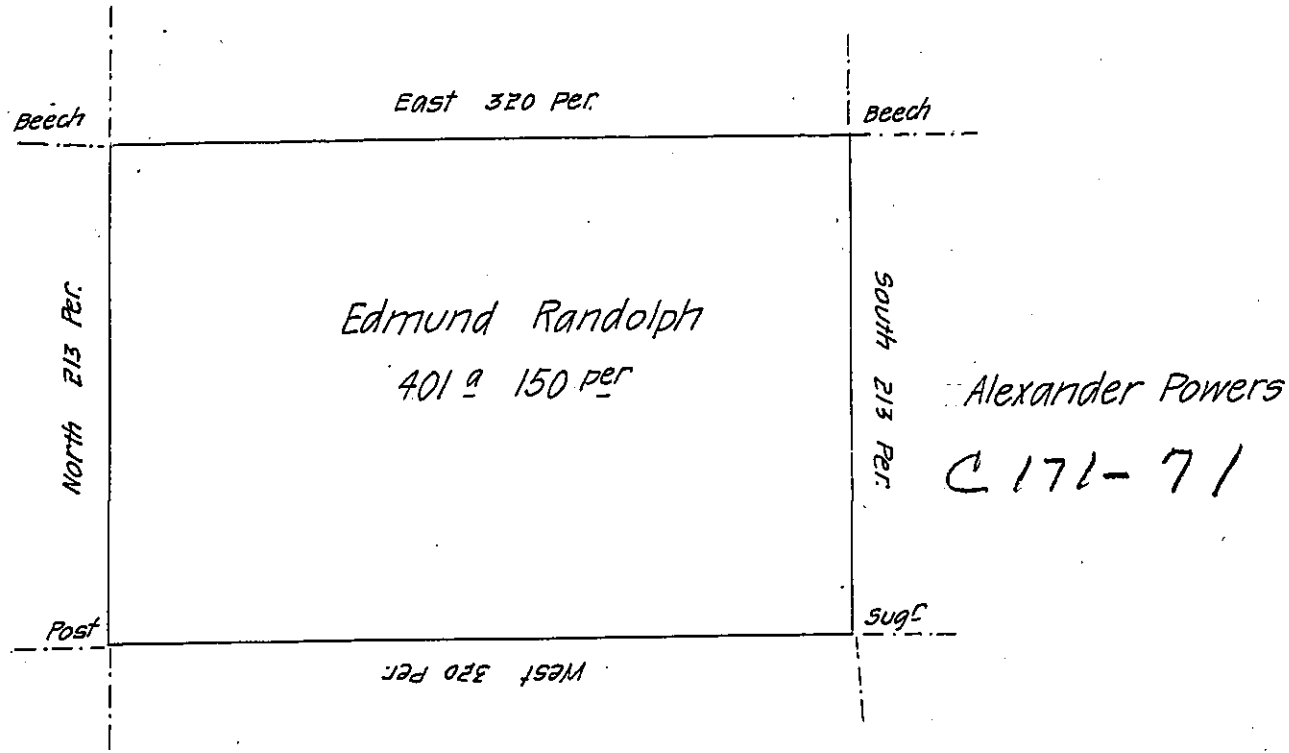


Wm Ralston



Wm Rowlee

Situate on the west side of French Creek Allegheny County
 Containing 401 acres 150 perches & allowance of six per cent
 for roads &c Survey'd the 14th day of May 1795 in pursuance of
 a warrant dated the 30th day of May 1792.

Wm Power DY SR

To Daniel Brodhead Esq^r
 Surveyor General.

IN TESTIMONY that the above is a copy of the original remaining on file in
 the Department of Internal Affairs of Pennsylvania, made
 conformably to an Act of Assembly approved the 16th day of
 February, 1833, I have hereunto set my Hand and caused
 the Seal of said Department to be affixed at Harrisburg,
 this eighteenth day of March 1907.

Laacir Brown
 Secretary of Internal Affairs.